

# Brigade T&O

INSECTICIDE/MITICIDE

## THE MULTI-INSECTICIDE IN ONE PACK

### Product description

80g/L Bifenthrin - Group 3A Insecticide

Brigade® T&O is an all-in-one Multi-Insecticide with a broad spectrum of activity on over 30 common house and outdoor pests. Brigade® T&O has been specifically formulated for fast knockdown and long residual activity indoors and out. It's unique water based formulation makes it non-staining, odourless and non-allergenic and it will not harm plants that are sprayed. Brigade® T&O can be used as an all round replacement for the older style, now redundant, chemical sprays

### Where to use

Brigade® T&O is registered for the control of a wide range of adult household insect pests including mosquitos, nuisance and biting flies, spiders, cockroach, a variety of ant species, ticks and fleas. In addition it also has registrations for the control of a number of common turf and ornamental pests including african black beetle, lawn armyworm, stem weevil, caterpillars, aphids, mites, white fly, mealy bug, thrips and wasps.

This product is ideal as a multi-insecticide spray for external and internal use in domestic, commercial, public and industrial buildings and their surrounds including turf and gardens.

### Features

- Broad spectrum multi-insecticide
- Fast knockdown with long residual
- Rainfast and stable in sunlight
- Odour free, non-staining, non-irritant
- Safe on plants and turf
- Can be used inside and outside buildings and surrounding gardens and turf
- Ideal around public and entertainment areas.
- Especially good on Spiders
- Compatible with a range of fungicides and herbicides
- Available in 5L and handy 1L packs.
- Cost effective and convenient to use

### How to apply

- Small areas - Knapsack sprayer or small motorised air blowers
- Large Areas - Machine mounted spray equipment



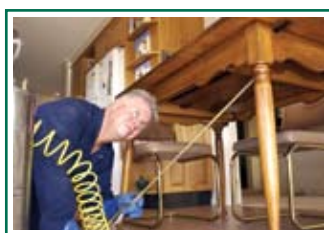
**FMC** For all your pest solutions

## List of pests registered for Brigade® T&O

CROP / SITUATION	PEST
Roses, Carnations & other ornamental plants	Two Spotted mite
	Aphids
	Caterpillars and loopers including heliothis, Corn ear worm, Native budworm, Light brown apple moth, Geranium plume moth
	Whitefly, Poinsettia white fly
	Mealy bug
	Plague thrips
	Cutworm in beds, containers and pots
Turf (eg. Lawns, commercial turf farms, parks, recreational areas, bowling greens, sports fields)	Lawn armyworm, Sod webworm
	Argentine stem weevil adults
	African black beetle adults
	Billbug adults
	Black ant, Coastal brown ant, Funnel ant, Meat ant, Sugar ant, Stinging ant
Internal & external Areas & Surrounds of Domestic, Commercial, Public & Industrial buildings and structures	Spiders
	Paper nest Wasps
	Ants, Cockroaches, Mosquitoes, Fleas, Flies, Ticks (Adults & Nymphs)
Domestic, Public, Commercial & Industrial areas	Subterranean Termites - (Post Construction treatments only)

*This table is to be used as a guide only. Always refer to the registered label before using this product*

## Treatment areas ideal for Brigade® T&O



*Under furniture*



*Walls and eaves*



*Shaded, dark, humid areas where mosquitoes congregate*



*Flower beds*



*Recreational areas*

**DO NOT** apply Brigade® T&O within 2 metres of a fishpond or water containing fish or aquatic species.

FMC and Brigade® are registered trademarks of FMC Corporation Philadelphia